

### HEAVY-DUTY WALL PLATE

Designed for compatibility with our Span-Lock catenary systems, the ABSWP100 offers huge tensile capacity making it suitable for a wide range of applications.

#### MATERIAL

Mild steel.

#### SURFACE FINISH

Hot-dip galvanised to 40 µm minimum.

#### SAFE WORKING LOAD

ABSWP100 has a SWL of 500 kg.

##### Important Note:

Overall SWL is governed by the strength of the base material as well as the quality of the fixings used to anchor to that base material.

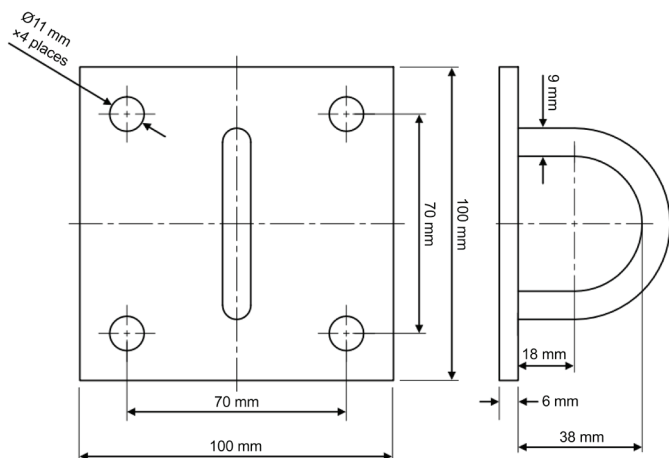
It is the responsibility of the installer to ensure suitability and integrity of the base material and selected anchors.

For assistance or advice please contact the Zip-Clip Technical Department.

#### DIMENSIONS

Spacing of the anchor hole centres on the wall plate allows installers to maximise the load capacities when using specialist fixing calculation software.

Providing suitable spacing for anchors increases the *cone of influence* in concrete applications.



#### AREAS FOR USE

Zip-Clip Heavy Duty Staple-on Wall Plates can be used for both internal and external applications, however, please note that the standard Zip-Clip Span-Lock catenary range is predominantly designed for in-door use.

For applications that are outside or in areas with elevated levels of corrosion, such as coastal regions, it is recommended to use stainless steel wire. Zip-Clip stainless steel N-Wire is available with a SWL of 400 kg.

For installations that are within corrosive areas consult with Zip-Clip Technical Department before installation.

#### MANUFACTURERS RECOMMENDATIONS

The Zip-Clip heavy-duty staple-on wall plate is designed to support **STATIC loads only**. Dynamic and shock loads must be avoided and can greatly increase the overall weight of the product being suspended and therefore compromise the safe working load of the suspension.

- Do not exceed the safe working load (SWL) of the product.
- Do not use for lifting applications.
- Do not shock load.
- Do not use for dynamic loads/installations.
- For specialist applications, such as corrosive environments, please contact Zip-Clip Technical Department.

For further information on Zip-Clip suspension solutions, for technical or sales enquiries, contact us on Tel: +44 (0)1686 623366 • Email [info@zip-clip.com](mailto:info@zip-clip.com)